

SOMACOLLOR



SOMACOLLOR High Durability Plywood



TECHNICAL DESCRIPTION

This special panel which is proper for painting is produced with selected high quality veneers. SOMACOLLOR is manufactured in accordance with the PNQM product standard and is subjected to quality control procedures.

SOMACOLLOR APPLICATIONS

- Side Covers.
- Road Implement: Dump Trucks, Trailers, Truck Bodies, Vans, Semi-Trailers, Bulk Carriers, Buses, etc.

CHARACTERISTICS OF MATERIALS | VENEERS

Raw materials from reforestation and sustainable management.
Pinus spp logs are pre-sorted and laminated as needed.

For the manufacturing of the plywood, sheets are classified according to their density, which impacts directly on their physical and mechanical resistance.

The greater density in the external part of the plywood panel gives it its strength and durability. The timber is situated in the highest density region of the oldest log, where the growth rings are closer (MA= Mature Wood).

PHENOLIC RESIN FOR SHEETS COLLAGE

The SOMACOLLOR panel is glued with a waterproof resin, phenol-formaldehyde (WBP), especially designed for outdoor use or protected environments where the elements are subjected to humidity, drying or action of water.

The resin used for bonding meets STANDARDS:

EN 314-2 EN 636-3S EN 636 2S EN 636-1S

BS 6566 PART B: 1985 TIPO WBP

Classe 3 | Uso Exterior

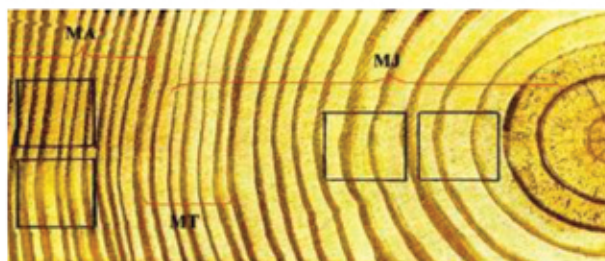


Figure 1 - Region of Mature, Transition and Youth Wood

FEATURES AND BENEFITS

- Eliminates the pre-finishing and sanding, reducing costs from material and process.,
- It is not necessary to paint the bottom side of the panel, therefore cost is reduced.
- Imperfections in plywood and joints are eliminated.
- Visual finish and final product quality improved
- Light and dimensionally stable.



SOMACOLLOR



www.somapar.com.br

União da Vitória - Paraná
Fone: +55(42) 3521-2900
somapar@somapar.com.br

CHARACTERISTICS OF THE PLYWOOD

Surface Finish	Coating	Tonality
Calibrated	Internal: FilmeFaced (not accepted Painting) 120 gr / m ² External: Film For Painting	Internal: Dark Brown External: Beige

MEASURE AVAILABLE

SomaCollor Standard		SomaCollor Spliced
Length (mm)	Width (mm)	Maximum Length (mm)
Up to 3000	Up to 1100	9000
Up to 3000	Up to 1220	Maximum Width (mm)
Up to 3000	Up to 1350	
Up to 3000	Up to 1600	1600

MACHINING

It is possible on request make holes, cutouts and rounding on tops.



TOLERANCES

Thickness	Kg/m ²	Thickness Variation	Set-Square	Dimensional
12 mm / 5L	6,36	± 0,8 mm	± 2,0 mm	± 2,0 mm
14 mm / 7L	7,42	± 1,0 mm	± 2,0 mm	± 2,0 mm
16 mm / 5L	8,48	± 1,0 mm	± 2,0 mm	± 2,0 mm
18 mm / 7L	9,54	± 1,0 mm	± 2,0 mm	± 2,0 mm

Standards EN 324 and EN 315

PACKAGING, TRANSPORT AND STORAGE

Packaged pallets are belted with polyester tape.

The SOMACOLLOR panel is sealed ink, to prevent / delay the absorption of moisture and ensure a tight seal decreasing the workability of the plywood panel. If they have to be cut during use, it is recommended that fresh edges be re- sealed to avoid localized swelling caused by rapid capillary penetration of moisture.