

# SOMAFILM



Film Faced Plywood with high number of pours for Civil Construction Industry and construction materials.

Indicated for confection of concrete forms in general.

## PRESENTATION

The SOMAFILM panel is marine plywood (phenolic glue WBP). Produced with natural resources renewable (veneers obtained by a sustainable source of reforestation and/or forest management). This way, the SOMAPAR clients buying our products, are contributing to sustainable development and preservation of environment.

## MAIN APPLICATIONS

Hardwood Plywood, proper for concrete forms, specially apparent flagstone, pillars and beans.

## TECHNICAL SPECIFICATIONS

**Composition:** engineering as per Standard EN 310 and NBR 9533

**Faces:** tropical wood veneers of species originated from areas of sustainable forests.

**Cores:** The wood species utilized in our SOMAFILM are originating from reforestation. Jointed avoiding overlapping of veneers, opening, and holes. Ensuring a standard of quality superior to the majority of competitors. This characteristic is fundamental in the resistance to static flexion (NBR9533 and EN 310).

## STANDARD MEASURES

SomaFilm Standard	
Length (mm)	Width (mm)
2200	1100
2200	1220
2440	1220
2500	1100
2500	1220

### THICKNESS

10mm, 12mm, 14mm, 15mm, 17mm, 18mm, 20mm, 21mm, 25mm. Other thickness on request.

### BORDER AS PER STANDARD NBR 9535-9486

Sealed with lacquer nitrocellulose to avoid/delay humidity absorption.

This differential of our product is fundamental to attend the Standard requirements NBR 9535-9486.

Ensure a perfect sealing, delaying, but not avoiding the swelling and contraction phenomenon.

### GLUING AS PER STANDARD EN 314, BS6566, DIN 68705/ BFU100, EN 363 AND NBR9534

The veneers are glued with a phenolic resin adhesive WBP, 100% water proof. In accordance with British standards and norms nr. 6566/8, type WBP, EN-314/2 type3, DIN 68705/BFU 100.

The SOMAFILM panel attends to all requirements of Standard EN363/3 and NBR 9534/1986 which guarantees the product high performance when exposed to the weather.

## CUSTOMIZED MEASURES

Not available for this product. For forms or pre-cut sheets, see SOMAFORMA.

### HUMIDITY AS PER STANDARD EN 322 AND NBR 9484

Humidity Content max. 12%

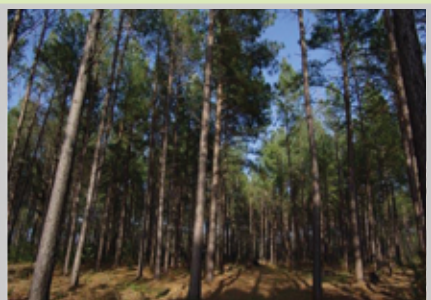
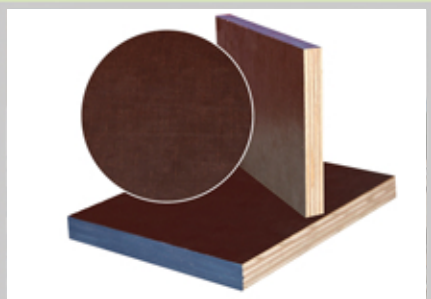
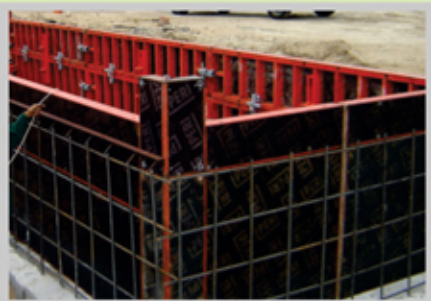
## REFORMED MEASURES

Not available for this product. For forms or pre-cut sheets with max. Length 9000mm and width 2500mm please see SOMAFORMA.



COMPANY CERTIFIED BY





**www.somapar.com.br**

União da Vitória - Paraná  
Fone: +55(42) 3521-2900  
somapar@somapar.com.br

## DIMENSIONAL TOLERANCE

Thickness	Thickness Variation	Set-Square	Dimensional
12 mm	± 0,8 mm	± 2,0 mm	± 2,0 mm
14 mm	± 1,0 mm	± 2,0 mm	± 2,0 mm

Standards EN 324 and EN 315

## CHARACTERISTICS

Surface Finish	Covering as per Standard DIN 53799, EN 438 and S923508
Calibrated	Laminated with phenolic film with 120 or 160/m <sup>2</sup> process. Available on black and brown color.

## MACHINING AND MECHANIZATION

Possible (on request) to make holes, cutouts, bevels, roundness on the tops, lowering borders, union tongue and groove, union with bevel, etc.

## ADVANTAGES & BENEFITS

- Excellent cost-benefit, higher retread, calibrated surface and recovered with phenolic film, available weight (120gr/m<sup>2</sup> and 160gr/m<sup>2</sup>), higher gluing resistance and costs reduction due to a high number of pours;
- Less variation on swelling and contraction index, reducing the number of blocks scratches and splits during the drying process;
- Powerful reduction on possible warps and torsions when compared to other products existing in the market
- High efficiency. Ensuring uniformity of concrete thickness on forms plies junction;

## GUARANTEES

Replacement in case of manufacturing defects.\*see technical proposal

The plywood panel has one year (12 months) guarantee against production defect, since the instructions have been followed. Are defined as production defect:

- Delamination of venners;
- Bubbles in the face, caused by brain failure;
- Product out of quality specified in the order;
- Dimensional out of the tolerances stipulated by PNQM.

## CLASSIFICATION

As per Standard ABNT and PNQM.

([http://www.abimci.com.br/index.php?option=com\\_content&view=section&id=7&Itemid=19](http://www.abimci.com.br/index.php?option=com_content&view=section&id=7&Itemid=19))

## TRACEABILITY

Through production lot number and or fabrication date is possible to trace all productive process and inputs and raw material origin that compose the product.

## PACKAGING, TRANSPORT AND WAREHOUSING

Spare parts or in pallets loaded in palletized way and belted with polyester tapes.

Guaranteeing the transport and safe warehousing, according to specification of each client previous negotiation, avoiding damaging to the product.

## FORMALDEHYDE EMISSION EN 717-2

Determined as per Standard EN 712-2. The Somafilm panel accomplishes with request type 1 of 3,5mg HCHO/h.m<sup>2</sup>. The results of the tests demonstrate that the formaldehyde emission is below the limit required by standard.