

# SOMAPLAC BB R&ES



## SOMAPLAC BB R&ES High Durability Building Plywood

### TECHNICAL DESCRIPTION

Produced with a selected high quality pine veneers, this special panel is proper for concrete / shuttering end use once it is covered with impregnating phenolic resin.



### CHARACTERISTICS OF MATERIALS | VENEERS

Raw materials from reforestation and sustainable management.

Pinus spp logs are pre-sorted and laminated as needed.

For the manufacturing of plywood, sheets are classified according to their density, which impacts directly on their physical and mechanical resistance.

The greater density in the external part of the plywood panel gives it its strength and durability. The timber is situated in the highest density region of the oldest log, where the growth rings are closer (MA= Mature Wood).

### PHENOLIC RESIN FOR SHEETS COLLAGE

The SOMAPLAC BB R&ES panel is glued with a waterproof resin, phenol-formaldehyde (WBP), especially designed for outdoor use or protected environments where the elements are subjected to humidity, drying or action of water.

The resin used for bonding meets STANDARDS:

EN 314-2 EN 636-3S EN 636 2S EN 636-1S

BS 6566 PART B: 1985 TIPO WBP

Classe 3 | Uso Exterior

All within the conventional classification E1 in the emission of phenol.

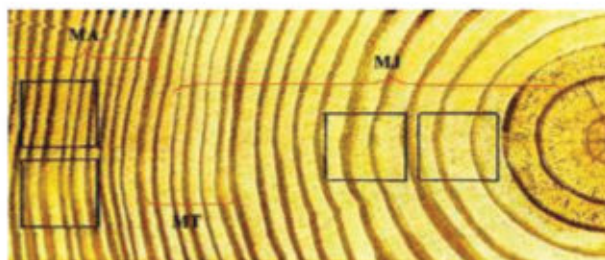


Figure 1 - Region of Mature, Transition and Youth Wood



# SOMAPLAC BB R&ES



[www.somapar.com.br](http://www.somapar.com.br)

Rod. BR 476 Km 363,40 nº 1238 - Bairro São Joaquim  
União da Vitória-PR, Brasil | CEP 84.605-250

[contato@somapar.com.br](mailto:contato@somapar.com.br)

+55 (42) 3521-2900 | +55 (42) 9 9990-0206

/SOMAPAR

somapar\_mad

## MEASURE AVAILABLE

Somaplac BB R&ES			
Standart measurements (mm)		Thicknesses	
Length	Widths	12	mm
2440	1220	14	mm
		18	mm
		25	mm

## COATES

### COATED

Face and back coated with a chemical liquid obtained through the polymerization of phenolic resin.

## FEATURES AND BENEFITS

- Increases the concrete placement cycles compared to traditional plywood.
- Easy to work with and install using conventional woodworking tools and fasteners.
- TECO® Certification. Structural Plywood. Strong and rigid panels.
- Light and dimensionally stable.

The SOMAPLAC BB R&ES panel is sealed with ink, to prevent / delay the absorption of moisture and ensure a tight seal decreasing the workability of the plywood panel. If they have to be cut during use, it is recommended that fresh edges be re-sealed to avoid localized swelling caused by rapid capillary penetration of moisture.